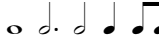



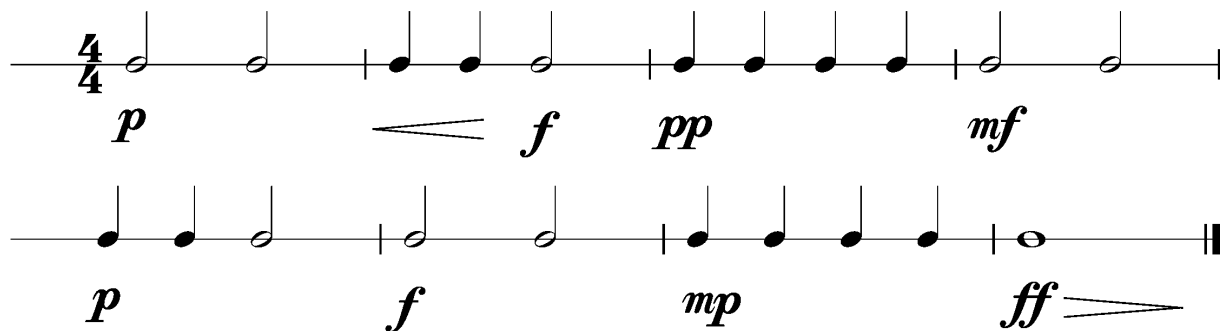
Anforderungen:

- 3 selbstgewählte Spielstücke: 1 schnelles, 1 langsames, 1 selbstgewähltes oder eines im Ensemble mit anderen Prüflingen/KollegenInnen (max. 12Pkt)
- 3 Tonleitertrainings ab Vorlage (max. 6Pkt)
- Rhythmus klatschen mit  inkl. Pausen (max. 2Pkt)
- 1 Lied ab Blatt spielen mit  (max. 2Pkt)
- Dynamikspiel *ff f mf mp p pp cresc. decresc.* (max. 2Pkt)

Dauer des gesamten Vorspiels ca. 10 Minuten

Nimm dieses Blatt zum Diplomvorspiel mit!

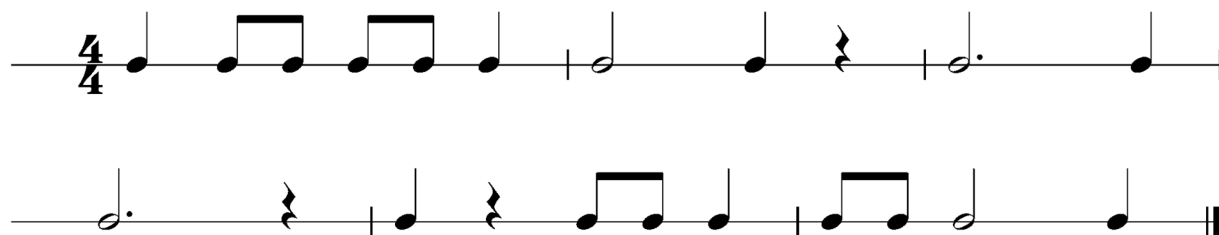
Dies ist ein Beispiel eines Dynamikchecks. Am Vorspieltag erhältst du einen ähnlichen Check (spielen, klatschen oder sprechen).



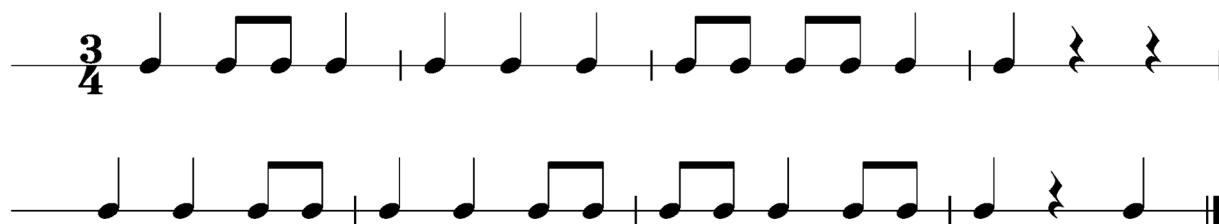
The image shows two staves of musical notation in 4/4 time, illustrating a dynamics check exercise. The first staff contains four measures of music with the following dynamics: *p*, *f*, *pp*, and *mf*. The second staff contains four measures of music with the following dynamics: *p*, *f*, *mp*, and *ff*. The notation includes quarter notes, eighth notes, and a half note, with dynamic markings placed below the notes.

Dies sind zwei Beispiele eines Rhythmuschecks. Am Vorspieltag erhältst du einen ähnlichen Check (spielen, klatschen oder sprechen).

Beispiel 1



Beispiel 2



Die Tonleitertrainings 1 bis 3 kannst du üben, da du diese am Vorspieltag vorspielen musst.

Tonleitertraining 1



Musical notation for Tonleitertraining 1, consisting of four staves of a C major scale in 4/4 time. The first staff shows the ascending scale (C4-D4-E4-F4-G4-A4-B4-C5), the second staff shows the descending scale (C5-B4-A4-G4-F4-E4-D4-C4), the third staff shows the ascending scale with a lower starting point (C3-D3-E3-F3-G3-A3-B3-C4), and the fourth staff shows the descending scale (C4-B3-A3-G3-F3-E3-D3-C3).

Das Tonleitertraining 2



Musical notation for Das Tonleitertraining 2, consisting of four staves of a D major scale in 4/4 time. The first staff shows the ascending scale (D4-E4-F#4-G4-A4-B4-C5), the second staff shows the descending scale (C5-B4-A4-G4-F#4-E4-D4), the third staff shows the ascending scale with a lower starting point (D3-E3-F#3-G3-A3-B3-C4), and the fourth staff shows the descending scale (C4-B3-A3-G3-F#3-E3-D3).

Das Tonleitertraining 3

The image shows a musical score for 'Das Tonleitertraining 3' for Alto Flute. It consists of four staves of music, each containing two measures. The first staff is in 4/4 time and C major. The second staff is in 4/4 time and D minor. The third staff is in 4/4 time and E-flat major. The fourth staff is in 4/4 time and F major. Each staff contains two measures of music, with the first measure being an ascending eighth-note scale and the second measure being a descending eighth-note scale. The notes are: Staff 1: C4, D4, E4, F4, G4, A4, B4, C5; Staff 2: D4, E4, F4, G4, A4, B4, C5, B4, A4, G4, F4, E4, D4; Staff 3: E4, F4, G4, A4, B4, C5, B4, A4, G4, F4, E4, D4, C4; Staff 4: F4, G4, A4, B4, C5, B4, A4, G4, F4, E4, D4, C4.