



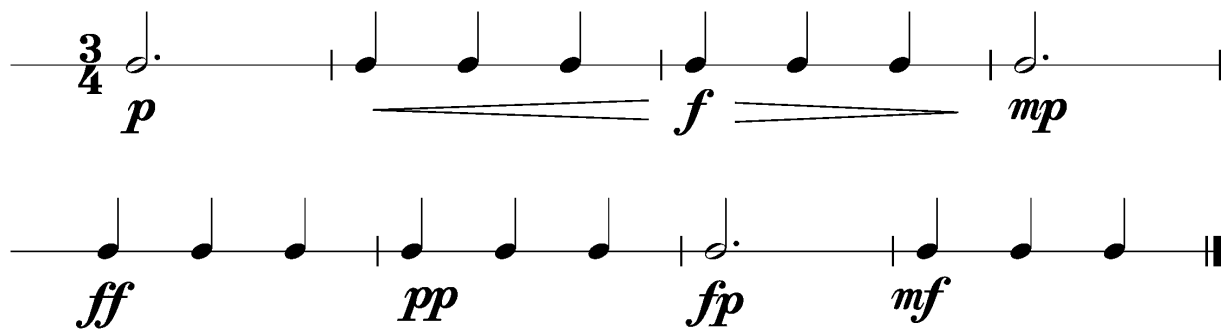
Anforderungen:

- 3 selbstgewählte Spielstücke: 1 schnelles, 1 langsames, 1 auswendiges (ca. 1 Min) oder zu 2./3. im Ensemble (max. 12Pkt)
- 5 Tonleitertrainings ab Vorlage (max. 10Pkt)
- 2 Lieder/Stücke ab Blatt spielen im $4/4$ $3/4$ $2/4$ und mit  (max. 2Pkt)
- Rhythmus klatschen mit  (max. 2Pkt)
- Dynamikspiel *ff f mf mp p pp sfz fp cresc. decresc.* (max. 2Pkt)

Dauer des gesamten Vorspiels ca. 15 Minuten

Nimm dieses Blatt zum Diplomvorspiel mit!

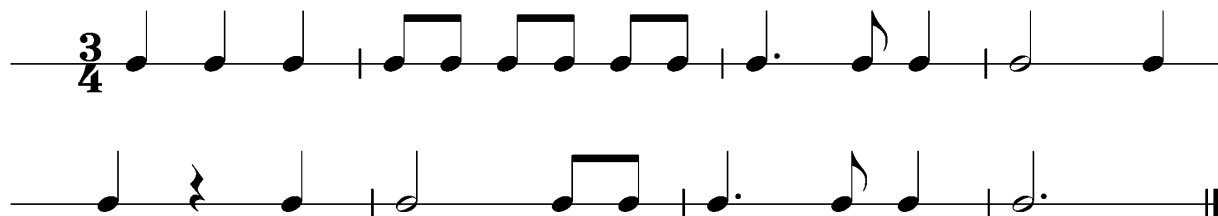
Dies ist ein Beispiel eines Dynamikchecks. Am Vorspieltag erhältst du einen ähnlichen (diesen kannst du spielen, klatschen oder sprechen).



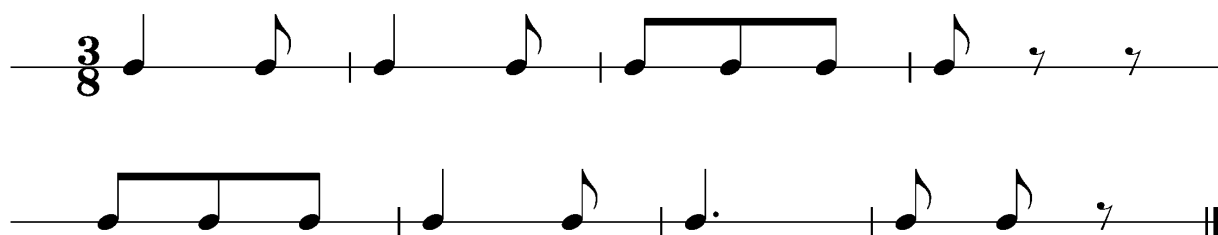
The image shows two staves of musical notation in 3/4 time. The first staff begins with a 3/4 time signature and a half note on a middle line, marked with a piano (*p*) dynamic. This is followed by a dotted quarter note on a middle line, marked with a forte (*f*) dynamic. The second staff starts with a quarter note on a middle line, marked with fortissimo (*ff*), followed by a dotted quarter note on a middle line, marked with pianissimo (*pp*), and a quarter note on a middle line, marked with fortissimo-piano (*fp*). The final note is a quarter note on a middle line, marked with mezzo-forte (*mf*).

Dies sind zwei Beispiele eines Rhythmuschecks. Am Vorspieltag erhältst du einen ähnlichen Check (spielen, klatschen oder sprechen).

Beispiel 1



Beispiel 2



Das Tonleitertraining 1 bis 5 kannst du üben, da du diese am praktischen Vorspieltag vorspielen musst.

Tonleitertraining 1



Tonleitertraining 2



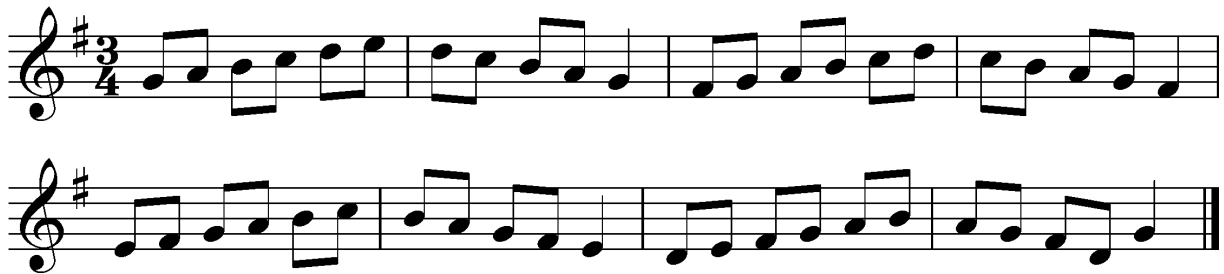
Two staves of musical notation for Tonleitertraining 2. The first staff is in G major (one sharp) and 3/4 time, showing an ascending and descending scale. The second staff is in G minor (two flats) and 3/4 time, showing an ascending and descending scale.

Tonleitertraining 3



Two staves of musical notation for Tonleitertraining 3. The first staff is in E-flat major (three flats) and 3/4 time, showing an ascending and descending scale. The second staff is in E-flat minor (four flats) and 3/4 time, showing an ascending and descending scale.

Tonleitertraining 4



Two staves of musical notation for Tonleitertraining 4. The first staff is in D major (two sharps) and 3/4 time, showing an ascending and descending scale. The second staff is in D minor (one flat) and 3/4 time, showing an ascending and descending scale.

Tonleitertraining 5



Two staves of musical notation for Tonleitertraining 5. The first staff is in A major (three sharps) and 3/4 time, showing an ascending and descending scale. The second staff is in A minor (no sharps or flats) and 3/4 time, showing an ascending and descending scale.